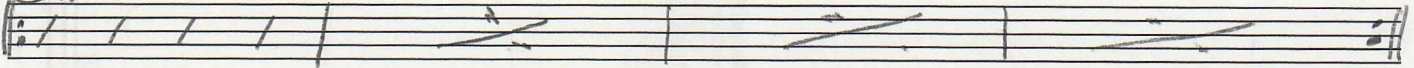


IZABELLA

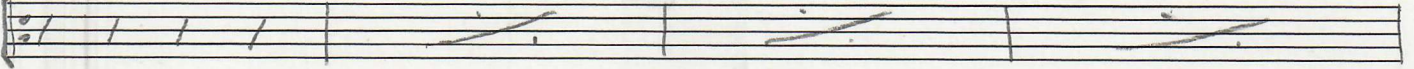
INTRO

F#min



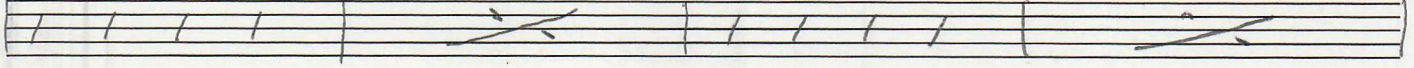
A

F#7



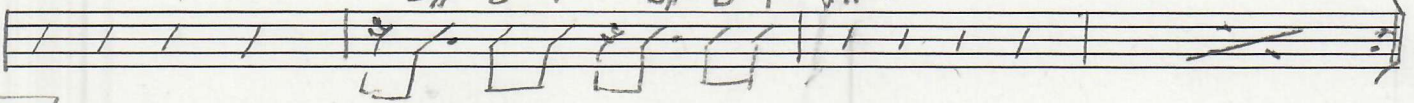
B7

F#7



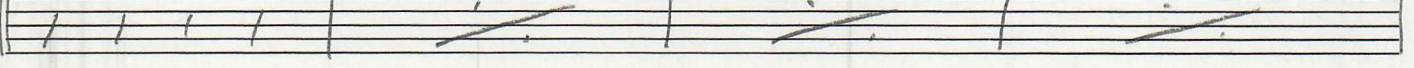
E

D# E F D# E F F#7



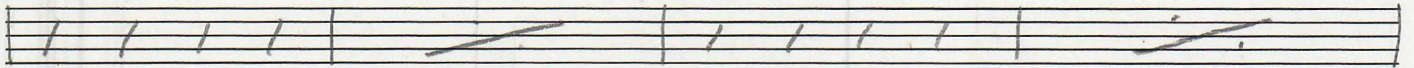
BRIDGE

F#7



B7

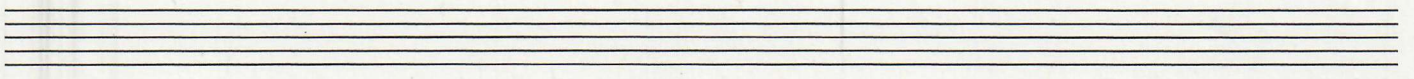
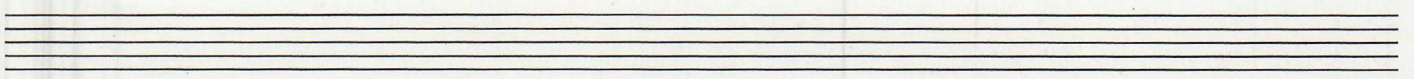
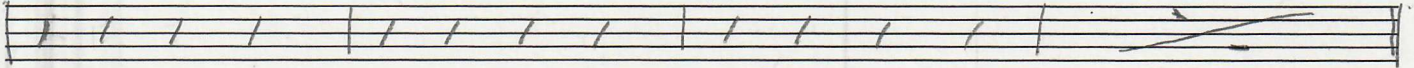
F#7



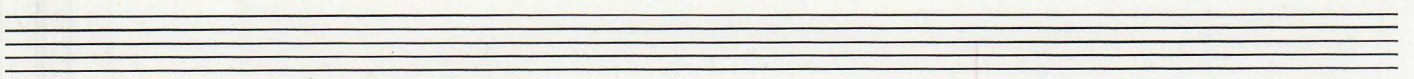
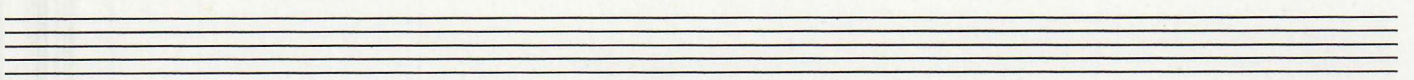
E7

B7

F#7



Sur F#7, jimi allere : F#7, F#9, F#7#9



I ZABELLA

RIFF INTRO GUITARE / RIFF BASSE [A]

Musical notation for guitar/bass riff. Key signature: F#7. Rhythm: 4/4. Fingering: 4 2 4 2 4 2 | 4 2 4 2 4 2 | 4 2 2 4 4 2 2 4 2 2 4 2 2 4.

BRIDGE : arpeggié

Musical notation for bridge. Key signature: F#7. Rhythm: 4/4. Fingering: 2 7 4 2 (2) 4 2 4 2 | 2 7 4 2 (2) 2 7 2 1 2 1 2.

Empty musical staff for guitar/bass.

Empty musical staff for guitar/bass.